

GBA Steering Committee Meeting 4-28-21

Dan McGinty - Chair

Meleny Thomas – South Baltimore Community Land Trust

Meredith Chaiken

Andy Schindling – after school programming

Rodette - GBA

Amanda Laraway - Transformation Center

Brent Flickenger – Community planner for City

Daisy Heartberg – Public Safety Partnership for GBA

Donna Hammens – Property manager at Curtis Creek Apartments – promoting angle parking

Jan Eveland – Action Baybrook renovation project

Karen Mull – business owner in Curtis Bay

Keasha Haythe AA Co Development Corp

Kendra Summers – educator, promoting vaccination

Michelle Farris – Brooklyn Park Career Center

Nischelle Santo – school secretary

Odessa Phillip – representing BGE Key Crossing Project

Sabrina Johnson – Boys and Girls Club

Mikah Zaslow City DOT

Sandra Matier DOT

Cory - Safe Streets Brooklyn

Larry Nunley – DPW

Tamya Asman – Bike Ped planner for AA Co. Brooklyn Park Study underway – in scoping phase

Mandy Memmel – The Well - vaccination clinic today with MedStar – Hon's Honey expansion, has home they are subleasing for women at risk, running drop in shower facility, car matching program to help women afford cars – local coffee service partnering with Hon's honey to train staff, starting licensed childcare, still doing food distribution on Thursdays, providing funding help.

Joanne Helouvry – Brooklyn Library

Bonnie Johansen – BGE

Herelys Parks – school coordinator

Indu Bodala (student)

Bonnie Johansen BGE – presentation

Project Background Review

- In the early 1970's, BGE put into service two 230kV transmission circuit segments that run under the Patapsco River adjacent to the Key Bridge
- The segments are composed of high voltage cables that run from Hawkins Point to Sollers Point inside of steel pipes pressurized with mineral oil
- The cables are exhibiting symptoms of degradation and approaching the end of their useful service life
- The system was installed in cooperation with Baltimore City's installation of a water main and a BGE gas main



Project Background – 230kV Transmission Ring

The existing cables are a critical link in the networked electrical system and failure could result in operational restrictions

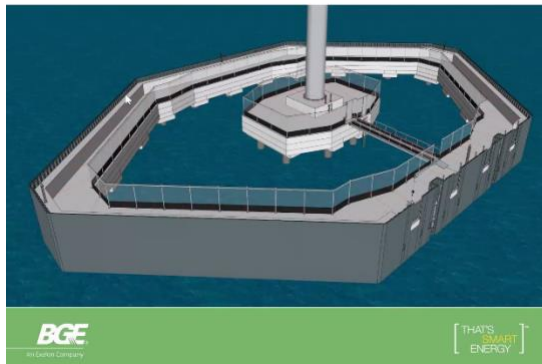


2019 Key Accomplishments

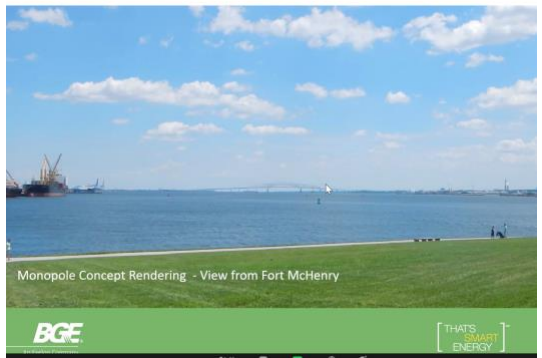
- Envisioned Early Permit Scenario (24 to 14 months)
- Created project video – Producers TV
- CPCN Interrogatories, Public Hearings, Testimony & Rebuttal Testimony
- JPA Permit Support, Public Hearings, Adaptive Management Approach
- Continued proactive & consistent stakeholder outreach
- Prepared engineering drawings & specifications IFC
- Received Phase 3 Funding Approval
- Prepared construction contract RFQ & RFP



Tower Vessel Collision Protection Structure

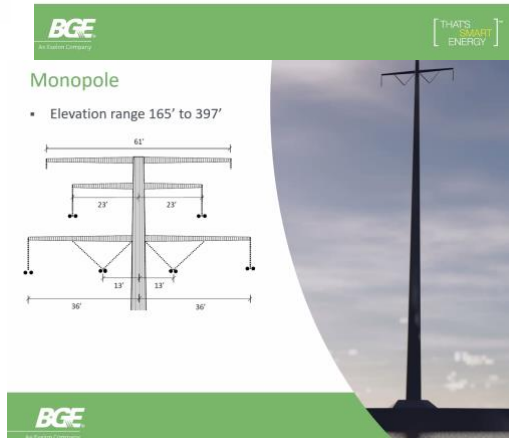


Overhead Transmission Line

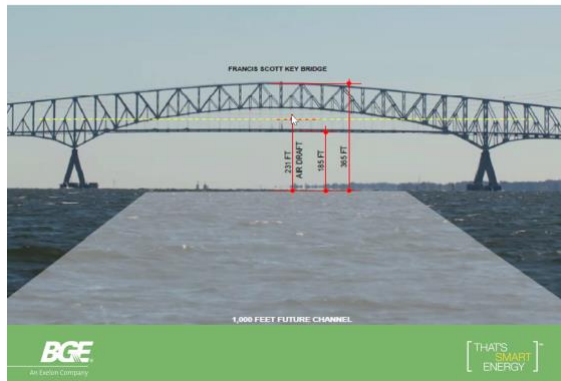


2020 Accomplishments

- Launched unifier project controls platform
- Awarded contract to McLean (local marine construction contractor)
- CPCN order issued by PSC Judge Lawrence (ahead of plan)
- Issued Limited Notice To Proceed to McLean (March 8, 2020)
- Received Federal & State environmental permits (early permit scenario)
- Developed and refined Environmental Compliance Plan
- Started In-Water Construction test pile program (early start May 11, 2020)
- Issued Final Notice To Proceed to McLean (June 30, 2020)
- **Early permits, CPCN order and construction start along with solid field performance during 2020 is enabling BGE to achieve an advanced schedule while reducing overall project capital cost**



Overhead Transmission Line Clearance



Overhead Transmission Line



Upcoming Stakeholder/Environmental Outreach

- **Begin scheduling outreach to key stakeholders and elected officials to update 2021 construction activities**
 - Elected Officials at the State and Local levels (Baltimore City, Baltimore County, AA County)
 - Harbor Safety and Coordination
 - Joint Environmental Committee (DNR, MDE, MHT, USFWS, MDOT Port Authority, Transportation Authority, State Highway Administration)
 - Community Groups; Turner Station, BayBrook Alliance
 - Baltimore City Planning/DPW
 - Ft McHenry

2021 Major Construction Activities (Early Plan)

- **March**
 - Complete all pile driving activities
- **April – June**
 - Set all remaining precast sections
 - Complete rebar & Cast-In-Place concrete placement at all tower locations
- **June – September**
 - Erect monopole sections at all tower locations
- **September – October**
 - Conduct overhead line stringing operation
- **November**
 - Start installation of plastic lumber and fender panels



2022 Activity Lookahead

- Complete installation of plastic lumber and UHMW panels at all marine tower locations
- Complete security measures
- Commission FAA & navigation lights
- Energize new overhead 230kV circuits
- Decommission existing HPFF circuits beneath the Patapsco River
 - Remove mineral oil, fill pipes with demineralized water
 - Cap and retire pipes and cables in-place
- Dismantle Hawkins & Sollers Point Terminal Stations, return sites to natural vegetation



Outreach Strategy Key Crossing

- Open/honest outreach has helped BGE develop trust with our stakeholders
- Maintained no known opposition throughout the permitting process
- To date, still no known opposition during the construction phase
- Continue to update key stakeholders on the project
- Provide a forum to continue to receive feedback as construction progresses
- Keeping Local and State Elected and Appointed Officials, Regulatory Agencies updated throughout the project
- *BGE Now* September 2019
- Video <https://www.youtube.com/watch?v=DRKP32RAIj>
- Developed Project Website that we update weekly
<http://www.bge.com/SmartEnergy/InnovationTechnology/Pages/Key-Crossing-Initiative.aspx>



Indu Bodala (student with

Food insecurity in AA Co. Increase student involvement. Building a Community Garden in Brooklyn Park.

Baltimore DOT

Mikah Zaslow BCDOT, Ira Kowler BDC

Capital request for streetscape improvements along Patapsco Ave. Design starting now.

Patapsco Ave. Project from Potee to 7th - MTA priority corridor up to 10th.

Traffic calming, pedestrian improvements, etc. Extensive community involvement process starting soon.

Consultant will be starting at latest by Fall.

Meleny Thomas: Truck traffic is a big problem in the community. How can this help with this?

Will need to have a NEPA process for federal funding and City DOT is currently working to work on this.

Truck cameras from City DOT have not been forthcoming? How can this be made a priority? Meleny:

Must be done and must be done soon! Go directly to DOT Director, send email to Mikah and she will connect.

Meredith – key issue for community!

BDC grant opportunity for outdoor furniture and fixtures for businesses. Encourage S. Baltimore.

Shanyna Rose – Transit equity project by City DOT

Connecting people to good jobs through transit

Priority Neighborhoods

- West Arlington
- Cylburn
- Central Park Heights
- Sandtown-Winchester
- Upton
- Harlem Park
- Cherry Hill
- Brooklyn
- Oldtown
- Dunbar-Broadway
- Pleasant View Gardens
- Belair-Edison

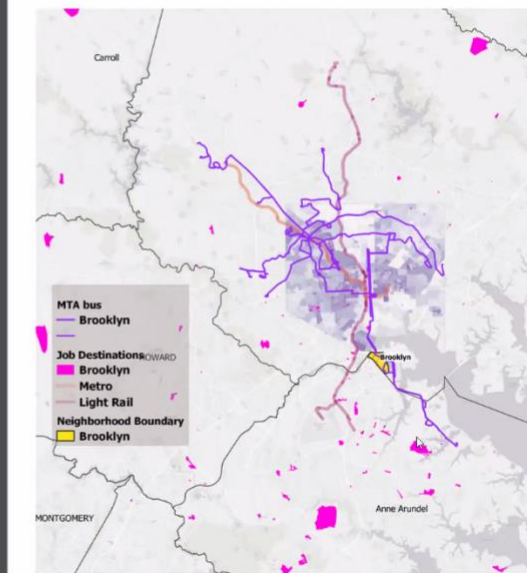
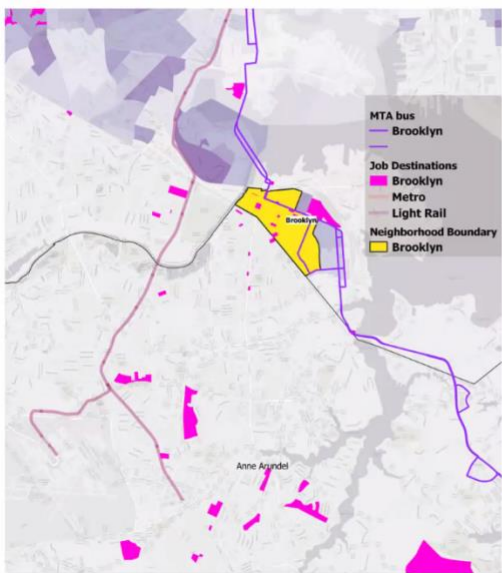
Baltimore City Department of Transportation is determining how to get City residents who need transportation assistance to good paying jobs.

Study Process:

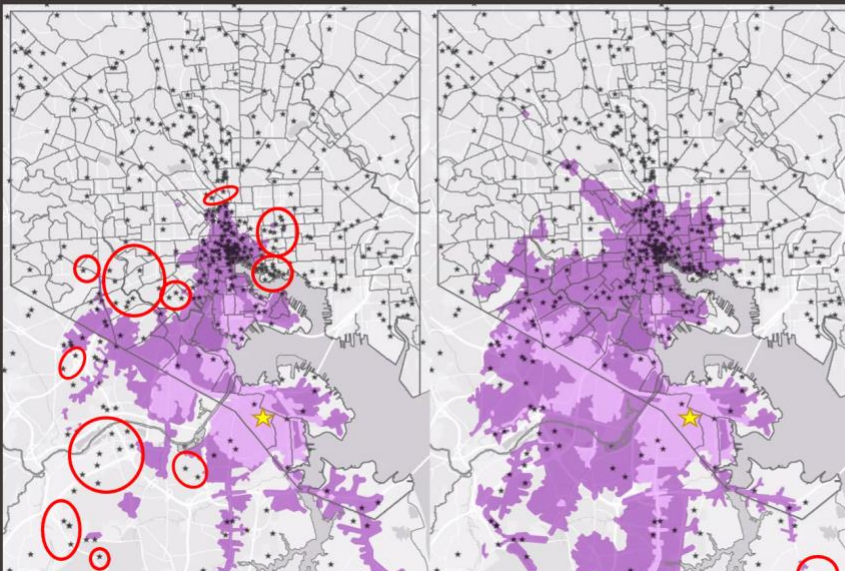
- Identify priority neighborhoods
- Analyze need using available data
- Get A LOT of public input
- Propose strategies
- Select recommendations

Goal: Implement recommendations, possibly pilot a service (contingent on funding availability, staffing capacity, etc.)

Current transportation options to where you work



Peak Hours: Suitable for 9am - 5pm Jobs



Map Key

- Black stars = 50 or more jobs that provide wages of at least \$15/hour
- Red circles = public transit "gaps"
- Yellow star = Brooklyn

Inaccessible:

- Johns Hopkins Bayview
- Johns Hopkins Hospital
- Towson
- Port of Baltimore
- North Baltimore
- East Baltimore

Possible Recommendations

- Deviated fixed-route transit service
 - Call buttons
 - Signage
 - Flexible hours
- Adjustments to existing transit lines
 - Timing
 - Frequency
 - Route
- Improved pedestrian connections to transit lines
- New Charm City Circulator routes

Expected Schedule:
Spring 2021: Outreach
Summer 2021: Analysis
Fall 2021: Recommendations

Ex of On-Demand Shuttle Service in Montgomery County: Ride On Flex

We want to hear from YOU!

- Where do you work?
 - If you don't work but would if given the opportunity, where would you like to work?
- How easy is it for you to use public transit to get to work?
 - Stop proximity
 - Number of transfers
 - Amount of walking
 - Buying a ticket/figuring out the schedule
- Have you ever not taken a job, or lost a job, due to poor public transit access?
 - Location incompatibility
 - Schedule incompatibility
 - Reliability
- What is the longest amount of time you would be willing to spend commuting?
 - Safety
 - Uncleanliness
 - Reliability
 - Too slow
 - Cost
- What are some reasons you might not take public transit consistently to work?
 - The stop is too far away
 - Feels unsafe to walk to/from the stop
 - Driving is easier
 - Don't know how to find the schedule
 - Too slow
 - With buying a ticket, figuring out the

Use this link to pinpoint where you work, or where you might want to find employment. In your comment, please detail your hours of employment, the days that you work, and where you live. You can pinpoint multiple jobs.

[Interactive Work Destination Map](#)

Please reach out to Shayna Rose if you want to offer more extensive feedback at Shayna.rose@baltimorecity.gov

Meredith: Transportation is one of the most important aspects for the Community health and economy.

Meredith: Review of BRNI ideas under consideration, looking for input from Steering Committee

BRNI FY22 steering committee ideas

File Edit View Insert Format Data Tools Add-ons Help Last edit was 2 hours ago

1	Need	Project	Description	Approx. Request
2	all	Greater Baybrook Alliance Operating Support	Supports the staffing and other operating costs for GBA to allow implementation of the Vision and Action Plan.	\$200,000
3	econ dev	Baybrook Facade Improvement Grant + Business Read	GBA - renewal of facade improvement grant program for commercial corridor - could include interior improvements. Consider higher funding for significant	\$150,000
4	quality of	Baybrook Placemaking Implementation	GBA - placemaking/installation of public art plus Spruce Up community component	\$75,000
5	housing	residential rehab developer incentive	Attract small developers to rehab residential buildings; funds for targeted area. 4 x \$30,000	\$200,000
6	housing	Residential facade improvement	Windows, doors, painting, chain link fence replacement - up to \$10,000/home.	\$100,000
7	transport	bike path	100% designs of bike path connecting Gywnn Falls Trail to BWI Trail Spur	\$400,000
8	quality of	Filbert Street Garden Processing Facility and ADA bathrooms	Design and construction of kitchen/food prep space and ADA compliant restrooms to allow day use and event rentals	\$150,000
9	workforce	City of Refuge Baltimore Community Campus for Social Transformation - commercial kitchen	Renovation of commercial kitchen and cafe area; designs for residential component.	\$500,000
10	econ dev	Drink at the Well	Rehab of space into liscenced day care facility	\$100,000
11	housing	Brooklyn Park Property Rehabilitation Program	ACDS - renewal of acquisition/rehab and residential facade improvement program in Brooklyn Park + Chain Link replacement	\$450,000
12	housing	Brooklyn & Curtis Owner Occupied Rehabilitation Program	Renewal of owner-occupied home repair program in Brooklyn and Curtis Bay.	\$100,000
13	youth	Community of Hope/BP space	Design or Phase 1 construction documents for the Brooklyn Park teen center	\$250,000
14	youth	United Way of Central Maryland/Ben Center daycare facility	Renovation funds to create day care facility adjacent to BFHS	\$250,000
15				

Meredith needs to know if there are any community concerns. Email her with comments.
Meredith@greaterbaybrookalliance.org